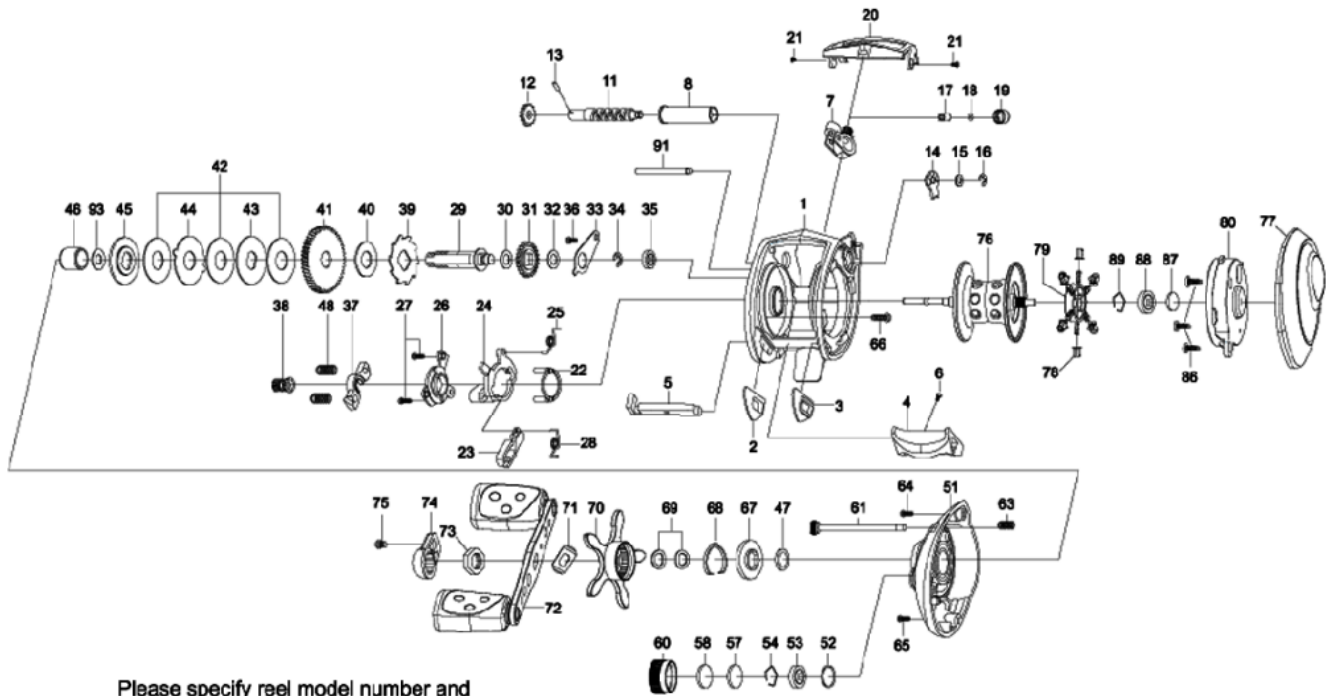


1122215 REVO

AMB.REVO S-L



Please specify reel model number and number in reel foot when ordering parts.

Ambassadeur REVO S-L 16 00

| パーツID | パーツ名 | 価格 |
|-------|-----------------------|--------|
| 1 | 保証終了)FRAME | ¥4,000 |
| 2 | SLIDE WASHER | ¥100 |
| 3 | SLIDE WASHER | ¥100 |
| 4 | THUMBAR | ¥300 |
| 5 | THUMBAR SHAFT | ¥150 |
| 6 | THUMBAR SCREW | ¥50 |
| 7 | LINEGUIDE | ¥500 |
| 8 | LEVEL WIND TUBE | ¥300 |
| 11 | WORM SHAFT | ¥1,500 |
| 12 | WORM SHAFT GEAR | ¥100 |
| 13 | WORM SHAFT PIN | ¥50 |
| 14 | WORM SHAFT PIN HOLDER | ¥70 |
| 15 | WASHER | ¥50 |
| 16 | RETAINER | ¥50 |
| 17 | PAWL | ¥300 |
| 18 | WASHER | ¥50 |
| 19 | LINE GUIDE NUT | ¥70 |
| 20 | 保証終了)FRONT COVER | ¥500 |
| 21 | SCREW | ¥50 |
| 22 | YOKE HOLDER | ¥100 |
| 23 | KICK LEVER | ¥150 |
| 24 | LIFT CURVE | ¥300 |
| 25 | CLUTCH SPRING | ¥50 |
| 26 | CLUTCH PLATE | ¥300 |
| 27 | SCREW | ¥50 |
| 28 | KICK LEVER SPRING | ¥50 |
| 29 | MAIN GEAR SHAFT | ¥1,000 |
| 30 | WASHER | ¥50 |
| 31 | LEVEL WIND GEAR | ¥100 |
| 32 | WASHER | ¥50 |
| 33 | MAINGEAR SHAFT PLATE | ¥200 |
| 34 | RETAINER | ¥50 |
| 35 | BALL BEARING | ¥600 |
| 36 | SCREW | ¥50 |
| 37 | YOKE | ¥100 |
| 38 | PINION | ¥1,000 |
| 39 | RATCHET | ¥150 |
| 40 | DRAG WASHER | ¥200 |
| 41 | MAINE GEAR | ¥2,000 |
| 42 | DRAG WASHER | ¥200 |
| 43 | D-WASHER | ¥150 |
| 44 | EAR WASHER | ¥150 |
| 45 | PRESURE WASHER | ¥150 |
| 46 | IAR SLEEVE | ¥200 |
| 47 | WASHER | ¥50 |
| 48 | YOKE SPRING | ¥50 |
| 51 | LEFT SIDE PLATE | ¥2,500 |
| 52 | O-RING | ¥50 |
| 53 | BALL BEARING | ¥600 |
| 54 | RING | ¥50 |

| パーツID | パーツ名 | 価格 |
|-------|------------------------|--------|
| 57 | RUBBER WASHER | ¥50 |
| 58 | FRICTION WASHER | ¥50 |
| 60 | BRAKE KNOB | ¥600 |
| 61 | CAM LOCK SCREW | ¥200 |
| 63 | SPRING | ¥50 |
| 64 | SCREW | ¥50 |
| 65 | SCREW | ¥50 |
| 66 | SCREW | ¥50 |
| 67 | CLICK SPRING HOLDER | ¥150 |
| 68 | CLICK SPRING | ¥70 |
| 69 | SPRING WASHER | ¥50 |
| 70 | STAR WHEEL | ¥2,000 |
| 71 | HANDLE WASHER | ¥70 |
| 72 | HANDLE | ¥3,000 |
| 73 | HANDLE NUT | ¥100 |
| 74 | HANDLE NUT CAP | ¥300 |
| 75 | HANDLE NUT COVER SCREW | ¥50 |
| 76 | 保証終了)SPOOL | ¥5,000 |
| 77 | RIGHT SIDE PLATE | ¥2,000 |
| 78 | BRAKE WEIGHT | ¥50 |
| 79 | BRAKE WEIGHT HOLDER | ¥200 |
| 80 | BEARING HOUSING | ¥1,500 |
| 86 | SCREW | ¥50 |
| 87 | WASHER | ¥50 |
| 88 | BALL BEARING | ¥800 |
| 89 | RING | ¥50 |
| 91 | LINE GUIDE SHAFT | ¥150 |
| 93 | WASHER | ¥50 |