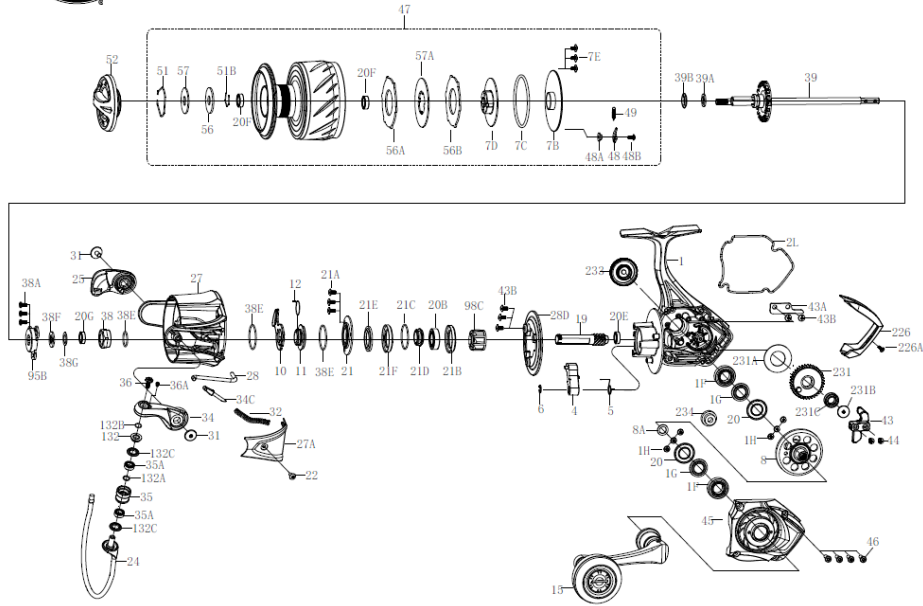




PARTS LIST FOR MODEL ATH8500HS



407-ATH8500HS Rev. 0 26-11-2021
1563166

パーツID	パーツ名	価格
1H	1489176 Bearing Screw (6 req)	¥ 300
1F	1489289 Main Gear Seal Ring(2 req)	¥ 300
1G	1577800 Seal Plate(2 req)	¥ 600
1	1577870 Housing Assembly	¥ 8,500
2L	1577801 Housing Seal ring	¥ 1,500
4	1489291 A/R Pawl	¥ 300
5	1489292 Pawl Spring	¥ 300
6	1190979 Retaining Clip	¥ 300
7B	1577802 Spool Pedestal Cover	¥ 1,000
7C	1577803 O-ring	¥ 500
7D	1577804 Spool Pedestal Cover	¥ 1,000
7E	1577805 Screw (3 req)	¥ 300
8A	1216652 Shim	¥ 300
8	1577871 Main Gear	¥ 8,000
10	1489294 A/R Holder	¥ 500
11	1577807 Bushing	¥ 500
12	1489296 Bushing Spring	¥ 300
15	1577872 Handle Assembly	¥ 6,500
19	1577873 Pinion Gear	¥ 5,000
20	1577810 Ball Bearing (2 req)	¥ 1,500
20B	1577811 Ball Bearing	¥ 2,500
20E	1577812 Ball Bearing	¥ 2,500
20F	1577813 Ball Bearing (2 req)	¥ 1,500
20G	1577814 Ball Bearing	¥ 2,500
21A	1192645 Screw (3 req)	¥ 300
21	1577815 Bearing Retainer	¥ 500
21B	1577816 Collar	¥ 300
21C	1577817 Bearing Retainer O-Ring	¥ 500
21D	1577818 Seal	¥ 1,000
21E	1577819 Pinion Gear Seal	¥ 300
21F	1577820 Bearing Cover	¥ 500
22	1577821 Screw	¥ 300
24	1577866 Bail Wire	¥ 2,500
25	1577823 Bail Holder	¥ 500
27	1577867 Rotor	¥ 4,000
27A	1577868 Bail Pivot Cover	¥ 500
28D	1489309 Rotor Brake	¥ 300
28	1577826 Trip Lever	¥ 300
31	1577827 Bail Arm Screw (2 req)	¥ 300
32	1489354 Bail Spring	¥ 300
34C	1489313 Pivot Arm	¥ 300
34	1577828 Bail Arm	¥ 1,000
35	1577829 Line Roller	¥ 800
35A	1577830 Ball Bearing (3 req)	¥ 2,500
36	1577831 Bail Stud Screw	¥ 300
36A	1577832 Bail Stud Screw	¥ 300
38E	1489317 Rotor O-Ring(2 req)	¥ 300
38F	1489318 Main Shaft Seal Ring	¥ 300
38	1577833 Rotor Nut	¥ 300
38A	1577834 Rotor Nut Cover Screw (3 req)	¥ 300

パーツID	パーツ名	価格
38G	1577835 Main Shaft Seal Washer	¥ 500
39	1577836 Main Shaft Assembly	¥ 1,800
39A	1577837 Thrust Washer	¥ 300
39B	1577838 Shaft Seal	¥ 300
43B	1489213 Plate Screw (5 req)	¥ 300
43	1577839 Crosswind Block	¥ 500
43A	1577840 Crosswind Block Plate	¥ 300
44	1191845 Crosswind Block Screw (2 req)	¥ 300
45	1577841 Housing Cover Assembly	¥ 2,500
46	1577842 Housing Cover Screw (4 req)	¥ 300
47	1577874 Spool Assembly	¥ 14,000
48A	1214226 Click Tongue Washer	¥ 300
48	1577844 Click Tongue	¥ 300
48B	1577845 Spool Click Screw	¥ 300
49	1211627 49-5000SG CLICK TONGUE SPRING	¥ 300
51	1308112 Drag Retaining Ring	¥ 300
51B	1577846 Drag Retaining Ring	¥ 300
52	1577847 Drag Knob Assembly	¥ 1,800
56	1577848 Drag Washer	¥ 2,500
56A	1577849 Drag Washer	¥ 1,500
56B	1577850 Drag Washer	¥ 2,000
57	1489330 Keyed Washer	¥ 300
57A	1577851 Keyed Washer	¥ 300
95B	1577852 Rotor Locking Plate	¥ 300
98C	1489332 Clutch/Sleeve Assembly	¥ 3,000
132	1577853 Roller Washer	¥ 500
132A	1577854 Line Roller Bushing	¥ 500
132B	1577855 O-Ring	¥ 300
132C	1577856 O-Ring (2 req)	¥ 300
226	1577857 Rear Cover	¥ 1,000
226A	1577858 Rear Cover Screw	¥ 300
231B	1489338 Crosswind Gear Screw	¥ 300
231	1577859 Crosswind Gear	¥ 1,600
231A	1577860 Crosswind Gear Washer	¥ 300
231C	1577861 Crosswind Gear Bearing	¥ 1,200
233	1577875 Bearing Cover Assembly	¥ 1,000
234	1577864 Transfer Gear	¥ 1,500