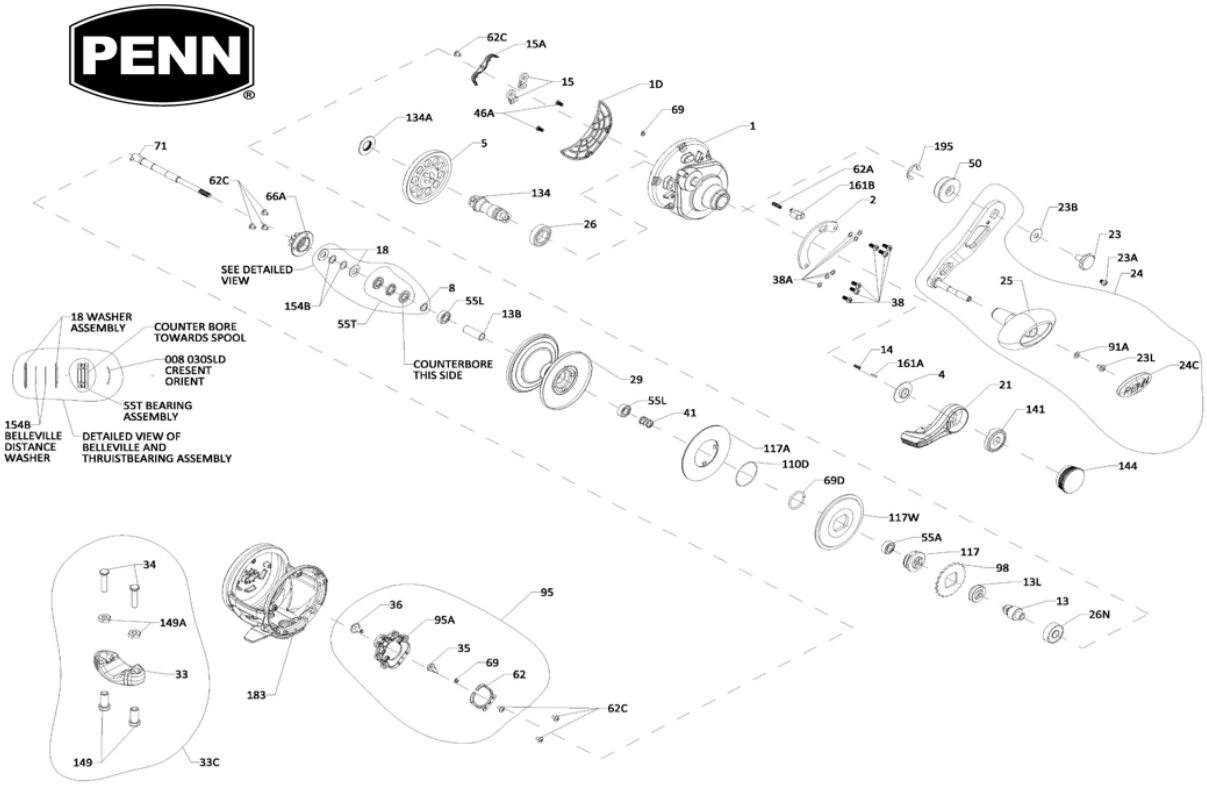


FATHOM II 25NLD, 30LD  
REEL PART NO. 1563378, 1563379



パーツID	パーツ名	価格
1	RIGHT SIDE PLATE - 1-FTHII25NLD	¥5,500
1D	GEARBOX COVER - 1D-FTHII25NLD2	¥1,500
2	QUADRANT - 2-FTHII25NLD2	¥800
4	WASHER- LEVER (004 TRQ15LD2)	¥300
5	MAIN GEAR (005 FTH30LD)	¥4,500
8	WASHER- CRESCENT (008 30SLD)	¥300
13B	SLEEVE SPINDLE (013BFTH25NLD2)	¥800
13	PINION (013 FTH30LD)	¥3,500
13L	SPACER (013LFTH40NLD)	¥500
14	SPRING- DOG (014 535)	¥300
15	DOG ASM (015 TRQ40)	¥300
15A	ANTI REV DOG RETAINER - 15A-FTHIILD	¥500
18	WASHER- SPRING (018 TRQ40NLD2)	¥300
21	DRAG LEVER - 21-FTHII30LD2	¥2,000
23L	SCREW 5-40X.188 5SLT PAN HD (023L750)	¥300
23B	PC WASHER (023B20)	¥300
23	HANDLE SCREW BLACK - 23-FTHIILD	¥300
23A	HANDLE LOCK SCREW BLACK - 23A-FTHIILD	¥300
24C	CAP- HANDLE KNOB (024C066)	¥600
25	Knob, Handle - Molded (025 trq40)	¥2,500
26N	26N-25BEARING BALL	¥3,000
26	BEARING- BALL (026 TRQ40NLD2)	¥2,500
29	SPOOL - 29-FTHII25NLD2	¥12,000
33	ROD CLAMP- BLACK (033 TRQ)	¥1,000
33C	ROD CLAMP KIT - 33C-FTHIILD2	¥3,500
34	SCREW, ROD CLAMP - 34-FTHIILD2	¥300
35	LINE ALARM PAWL (035 20)	¥500
36	CLICK BUTTON (036 FTHII15SD)	¥600
38A	WASHER- FOR SCREW (038A20)	¥200
38	SCREW M3X6 (038 FTH15LD2)	¥300
41	SPRING- DRAG DISENGAGE (041 TRQ40NLD2)	¥300
46A	COVER PLATE SCREW (46A FTHII30LW)	¥300
50	SHIELD, GUARD (050FTH30LD2)	¥1,500
55A	BALL BEARING (6x12x4) (055A050SLD)	¥2,500
55T	BEARING ASM- THRUST 12X6X4.5 (055T30SLD)	¥3,000
55L	BALL BEARING 6x12x4 (055L020)	¥2,500
62C	SCREW (062C20)	¥300
62	LINE ALARM SPRING (062 20)	¥500
62A	SPRING- CLICK LOCATOR (062 TRQ40)	¥300
66A	CLICK RATCHET (066AFTHLD)	¥800
69	RETAINER 2X5 (069 20)	¥300
69D	RING- RETAINING (069DFTH15LD)	¥300
71	SPINDLE - 71-FTHII25NLD2	¥1,500
91A	WASHER- HANDLE (091ATRQ40NLD2)	¥300
95	CLICK MODULE ASSEMBLY - 95-FTHIILD2	¥3,000
95A	CLICK MODULE HOUSING - 95A-FTHIILD2	¥1,000
98	RATCHET (098 FTH40NLD2)	¥1,000
110D	RETAINING RING (110DFTH15LD2)	¥300
117	DRIVE PLATE (117 FTH15LD2)	¥1,500
117A	DRAG WASHER (ASSEMBLY) (117AFTH25NLD2)	¥2,000

パーツID	パーツ名	価格
117W	DRAG WASHER (117WFTH25NLD2)	¥1,500
134A	NUT- GEAR STUD (134A30SLD2)	¥300
134	GEAR STUD (134 FTH40NLD)	¥2,000
141	CAM FOLLOWER - 141-FTHIILD	¥800
144	PRESET KNOB ASSEMBLY - 144-FTHIILD	¥1,000
149	149-45ROD CLAMP NUT	¥300
149A	NUT- HEX (149 200)	¥400
154B	SHIM 8.5mm X 6.2mm X .3mm(154BFTH25NLD2)	¥300
161A	PIN- LEVER CLICK (161ATRQ15LD2)	¥300
161B	STRIKE BUTTON ASM (161BTRQ40NLD2)	¥500
183	FRAME ASSEMBLY - 183-FTHII25NLD2	¥9,000
195	RING- RETAINING (195 040)	¥300